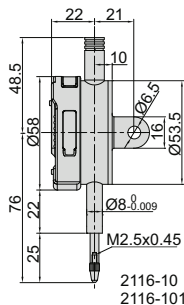


DATA  
OUTPUT

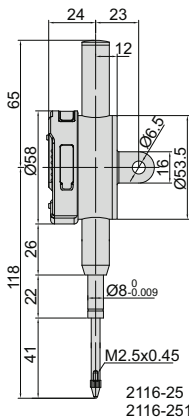
spindle lift knob is  
included



2116-10  
2116-101



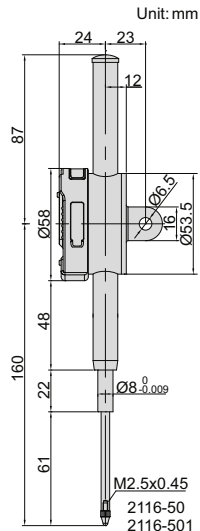
**2116-10**



2116-25  
2116-251



**2116-251**



2116-50  
2116-501



**2116-501**

## METRIC DIGITAL INDICATORS

Unit: mm

- Button function: on/off, zero, change measuring direction, data preset, absolute/incremental measurement
- Keep preset data in memory after restart
- CR2032 battery, automatic power off, data output
- Optional accessory: data output cable (code 7315-, 7302-, 7305-), backs (page 129~130), contact points (page 126~128)

### Resolution 0.001mm

Code	Range	Accuracy	Hysteresis	Remark
<b>2116-101F *</b>	12.7mm	5µm	2µm	flat back
<b>2116-251F *</b>	25.4mm	5µm	3µm	flat back
<b>2116-501F *</b>	50.8mm	6µm	3µm	flat back
<b>2116-101 *</b>	12.7mm	5µm	2µm	lug back
<b>2116-251 *</b>	25.4mm	5µm	3µm	lug back
<b>2116-501 *</b>	50.8mm	6µm	3µm	lug back

### Resolution 0.01mm

Code	Range	Accuracy	Hysteresis	Remark
<b>2116-10F *</b>	12.7mm	20µm	10µm	flat back
<b>2116-25F *</b>	25.4mm	20µm	10µm	flat back
<b>2116-50F *</b>	50.8mm	30µm	10µm	flat back
<b>2116-10 *</b>	12.7mm	20µm	10µm	lug back
<b>2116-25 *</b>	25.4mm	20µm	10µm	lug back
<b>2116-50 *</b>	50.8mm	30µm	10µm	lug back

\* Supplied with manufacturer inspection certificate traceable to NIST USA